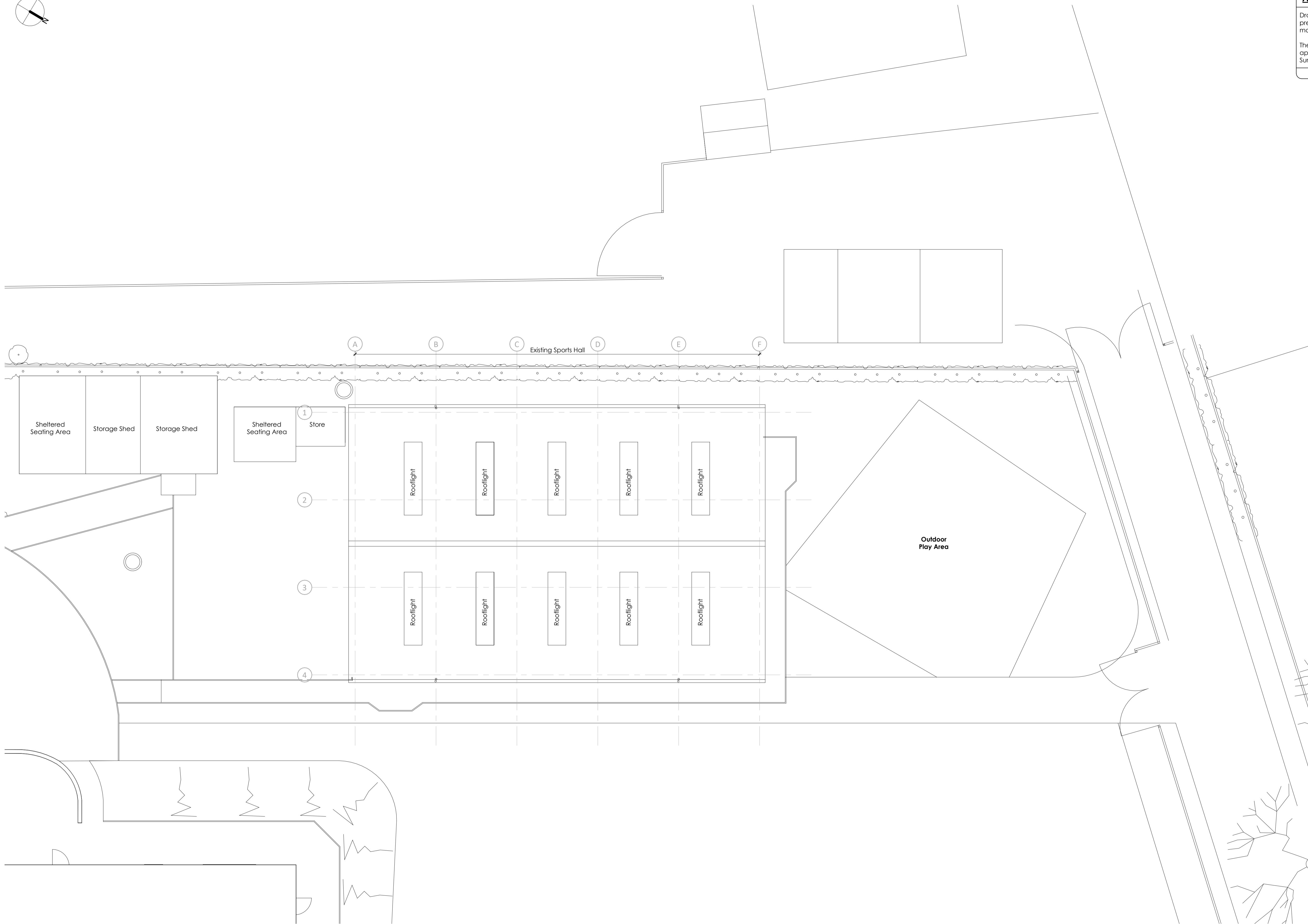


Architects Notes

Drawing is based on existing drawings provided by previous Architect and as such Logic Architecture Ltd make no guarantees as to its accuracy.

The topographical features as illustrated are thus approximate and subject to a detailed Topographical Survey.



P3	Planning Issue	EMS	15-05-24
P2	Planning Issue	EMS MB	15-03-24
P1	Preliminary Planning Issue	EMS MB	19-02-24
Rev	Issue	Drawn	Chkd Date

logic

Boho 7 | Queens Square | Middlesbrough | TS2 1PA
 (01642) 309307

Palace Hub | Esplanade | Redcar | TS10 3AE
 (01642) 309307

Morwick Hall | Martec Office Park | York Road | Leeds | LS15 4TA
 (0113) 823 2888

E: admin@logicarchitecture.com W: logicarchitecture.com

Client
Mowbray School

Project
Mowbray School Sports Hall Alterations and Extension

Drawing
Existing Site Plan

Scale	1 : 100	@ A1	Author	EMS
Date	02/27/24		Checked	MB

Status	PLANNING	Client No.	Revision
		---	P3

Project No.	Originator	Zone	Level	Type	Role	Series	Number
2401	-LAL-	XX-RF-	DR-A-	00-	101		