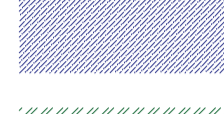


DO NOT SCALE

KEY:

-  PAVEMENT OPTION A
-  PAVEMENT OPTION B
-  PAVEMENT OPTION C
-  PAVEMENT OPTION D
-  PAVEMENT OPTION E

- NOTES:**
1. DO NOT SCALE FROM THIS DRAWING
 2. THIS DRAWING IS TO BE READ IN CONJUNCTION WITH THE DESIGN RISK REGISTER FOR ANY IDENTIFIED POTENTIAL RISK.
 3. THIS DRAWING SHOULD BE USED IN CONJUNCTION WITH THE 700 SERIES SPECIFICATION APPENDICES.
 4. FOR PAVEMENT STANDARD DETAILS REFER TO DRAWING NYKGDD-WSP-HPV-SG-DR-CH-00007
 5. THE DESIGN CBR HAS BEEN BASED ON PAVEMENT INVESTIGATION DATA AND THE ACTUAL CBR VALUES USED FOR DIFFERENT SECTIONS ARE PRESENTED IN SCHEDULE 3 OF APPENDIX 7/1. THE CONTRACTOR IS RESPONSIBLE FOR UNDERTAKING CBR TESTING TO IAN 73/06 REV 1 CI 5.3 TO CONFIRM THE DESIGN CBR PRIOR TO CONSTRUCTION. AREAS WITH VALUES LOWER THAN THE SPECIFIED DESIGN CBR WILL REQUIRE IMPROVEMENT TO THE DESIGNER'S SPECIFICATION.
 6. REFERENCE SHALL BE MADE TO THE STRUCTURES DESIGNS TO CONFIRM LOCATIONS OF STRUCTURES
 7. THIS DESIGN HAS BEEN ISSUED IN ADVANCE OF THE FULL GROUND INVESTIGATION RESULTS. IT IS POSSIBLE THAT, FOLLOWING REVIEW OF THE GROUND INVESTIGATION CHANGES MAY BE REQUIRED TO THE EARTHWORKS DESIGN WITH ASSOCIATED IMPACTS ON THE DESIGN OR LAYOUT OF OTHER ELEMENTS OF THE PROJECT. THIS DRAWING IS THEREFORE SUBJECT TO POSSIBLE CHANGE FOLLOWING REVIEW OF THE GROUND INVESTIGATION WHEN THIS HAS BEEN MADE AVAILABLE TO WSP.
 8. THE DESIGN INFORMATION SHOWN ON THIS DRAWING AND ANY ASSOCIATED SETTING OUT INFORMATION IS BASED ON LOCAL GRID.

SAFETY, HEALTH AND ENVIRONMENTAL INFORMATION

READON TO THE HAZARDS/RISKS NORMALLY ASSOCIATED WITH THE TYPES OF WORK DETAILED ON THIS DRAWING, NOTE THE FOLLOWING BENEFICIAL RESIDUAL RISKS. REFER TO LATEST VERSION OF T446-DRM SCHEDULE 4 AND KEX GILL FOR FURTHER DETAILS.

CONSTRUCTION

CONSTRUCTION STATUTORY UNDERTAKERS SERVICES

CON: PRESENCE OF TARI BOARD MATERIAL THROUGHOUT THE PAVEMENT CONSTRUCTION

REV	DATE	BY	DESCRIPTION	CHK	APP
C01	31/07/2023	NG	FOR CONSTRUCTION	RM	DD

DRAWING STATUS: **S3 - FOR REVIEW**



Three White Rose Office Park, Millshaw Park Lane, Leeds, LS11 0DL UK
T+ 44 (0) 113 395 6200, F+ 44 (0) 113 395 6201
wsp.com

CLIENT: 

DESIGNER: 

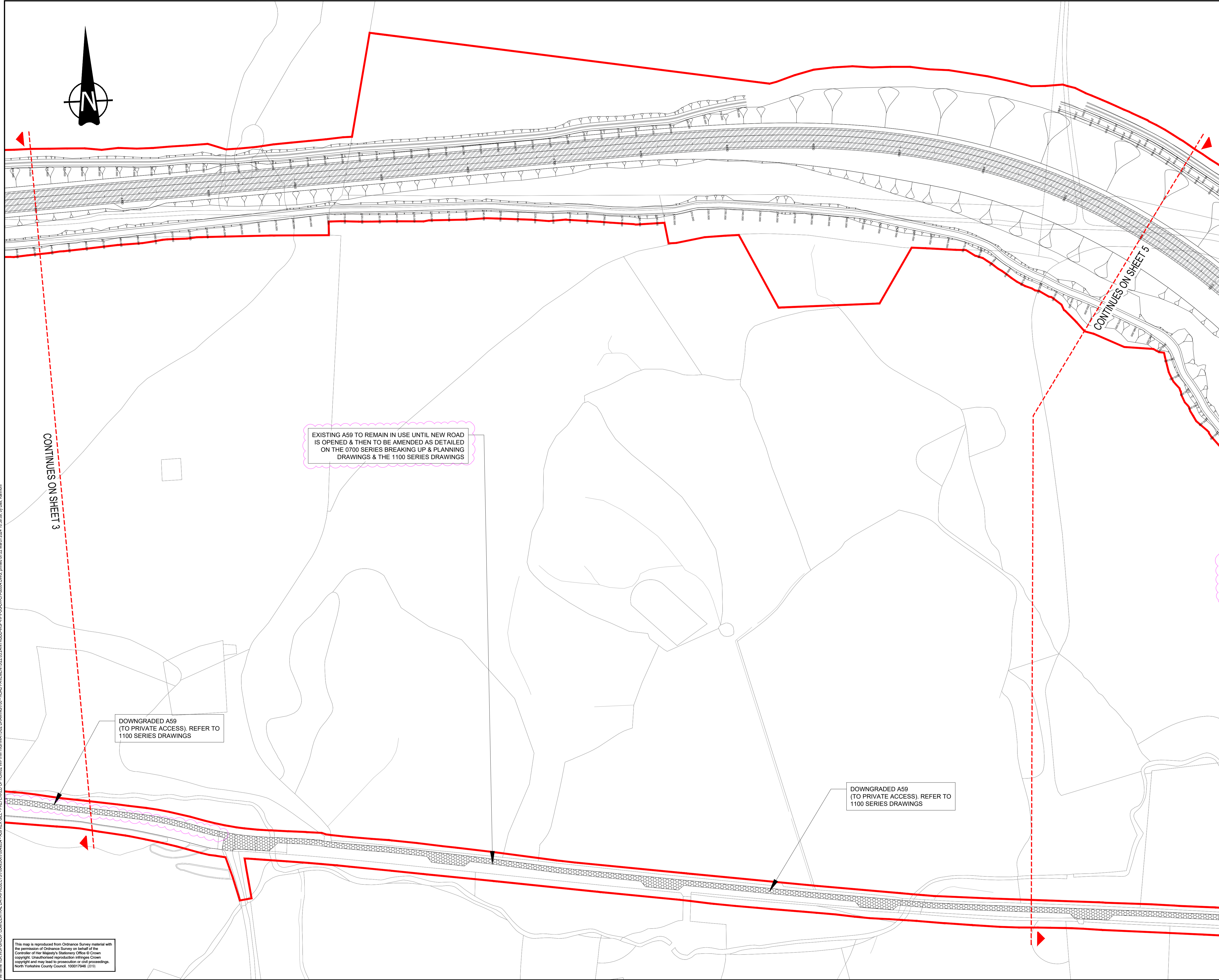
SITE/PROJECT: **A59 KEX GILL DIVERSION**

TITLE: **ROAD PAVEMENTS GENERAL ARRANGEMENT SHEET 4 OF 6**

SCALE @ A1:	CHECKED:	APPROVED:	
1:1000	RM	DD	
PROJECT NO:	DESIGNED:	DRAWN:	DATE:
70049554	WA	NG	31/07/2023

DRAWING NO: **NYKGDD-WSP-HPV-SG-DR-CH-00004** REV: **C01**

© WSP UK Ltd



File name: \\UK.WSPGROUP.COM\CENTRAL_DATA\PROJECTS\70049554\AS5\KEX GILL - PREFERRED OPTION\2 WIP\HW\HIGHWAYS\02 DRAWING\700 - ROAD PAVEMENT\S3\23\23\24\NYKGDD\WSP-HPV-SG-DR-CH-0004.DWG, printed on 22 March 2024 18:38:09 by Dak Kumari

This map is reproduced from Ordnance Survey material with the permission of Ordnance Survey on behalf of the Controller of Her Majesty's Stationery Office © Crown copyright. Unauthorised reproduction infringes Crown copyright and may lead to prosecution or civil proceedings. North Yorkshire County Council, 1995/17946 (2/11)