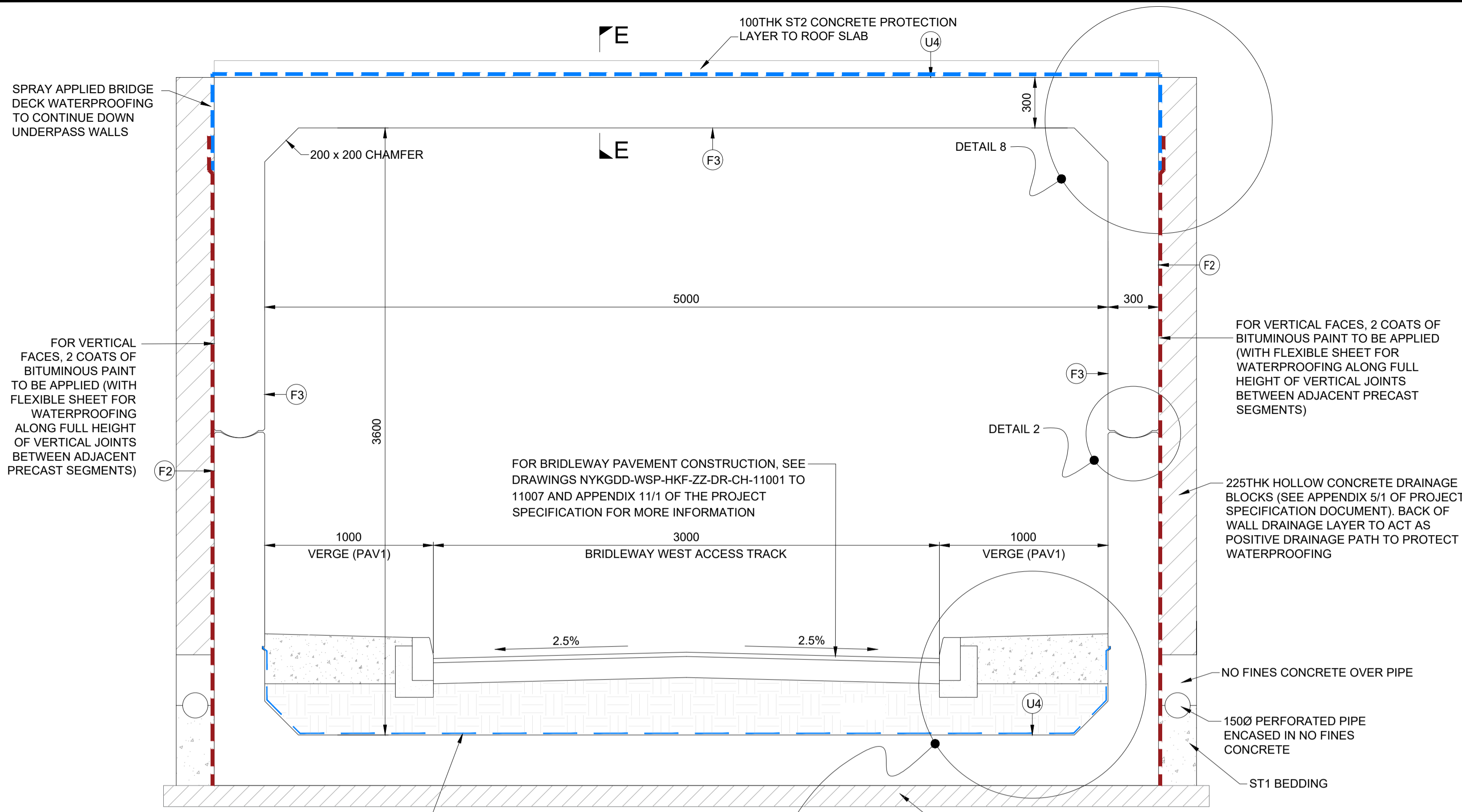
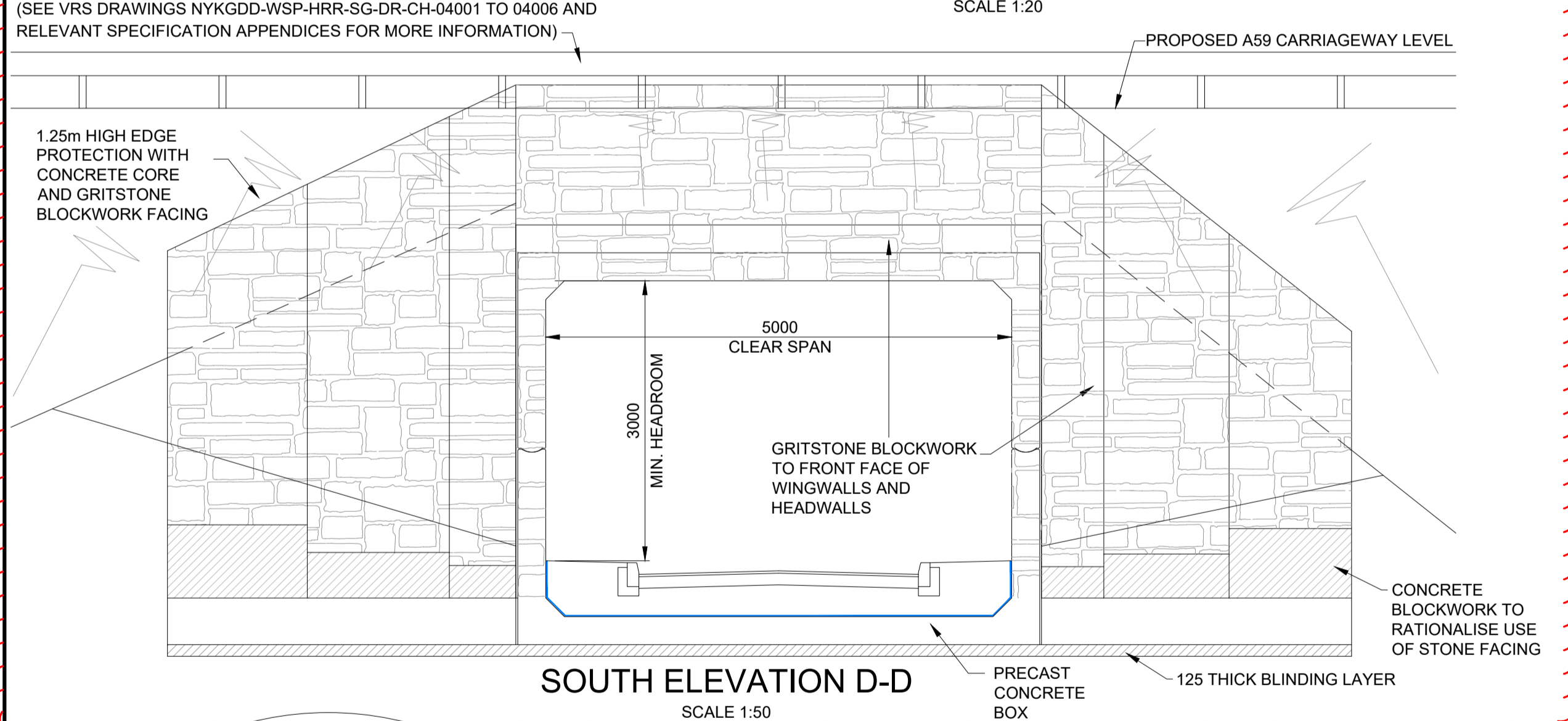


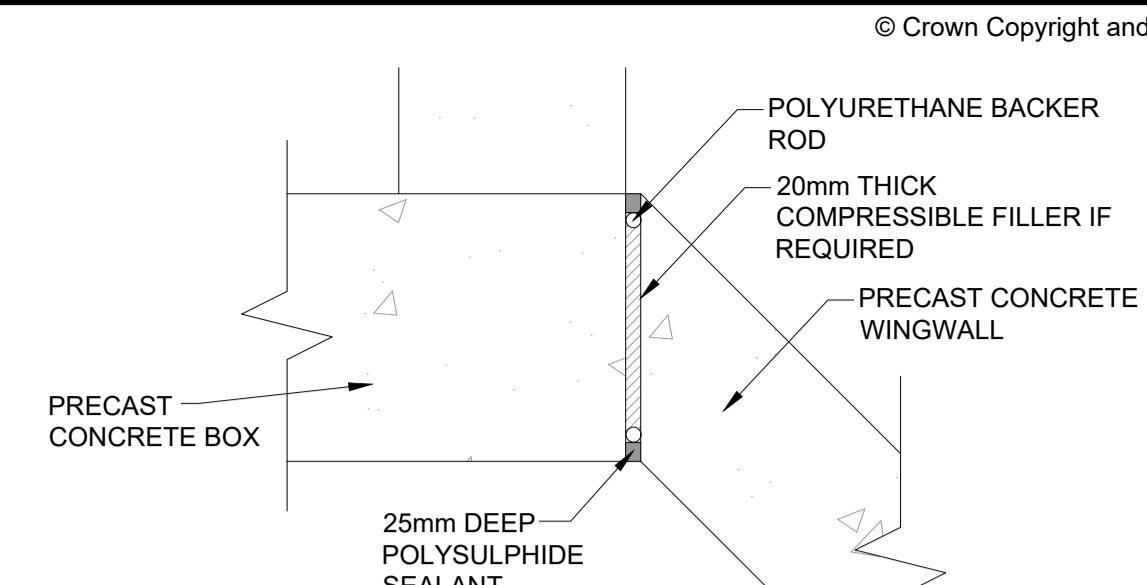
DO NOT SCALE



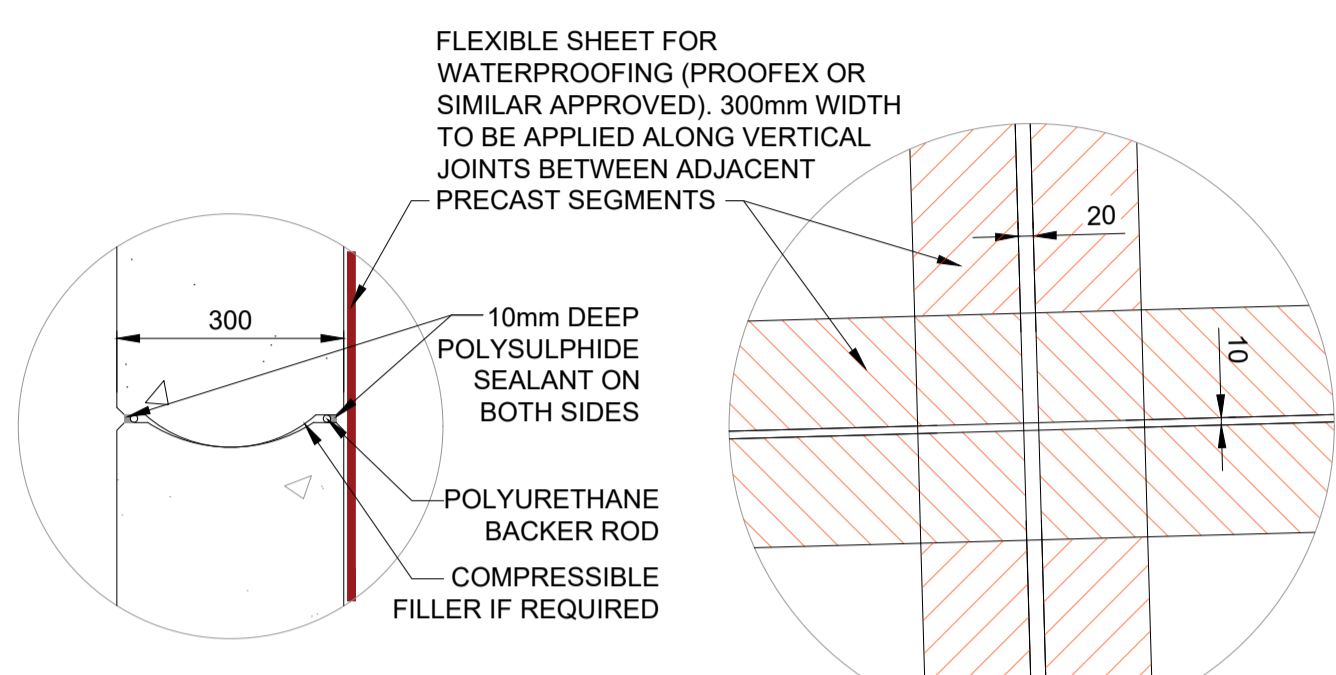
TYPICAL SECTION THROUGH UNDERPASS STRUCTURE
SCALE 1:20



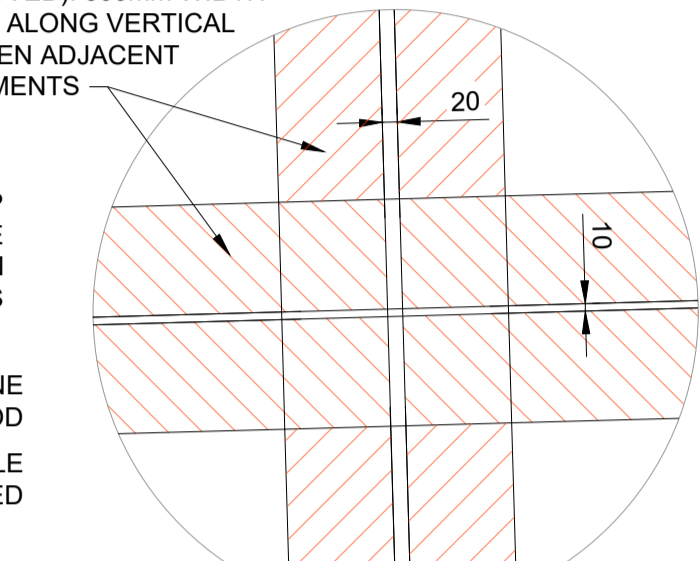
SOUTH ELEVATION D-D
SCALE 1:50



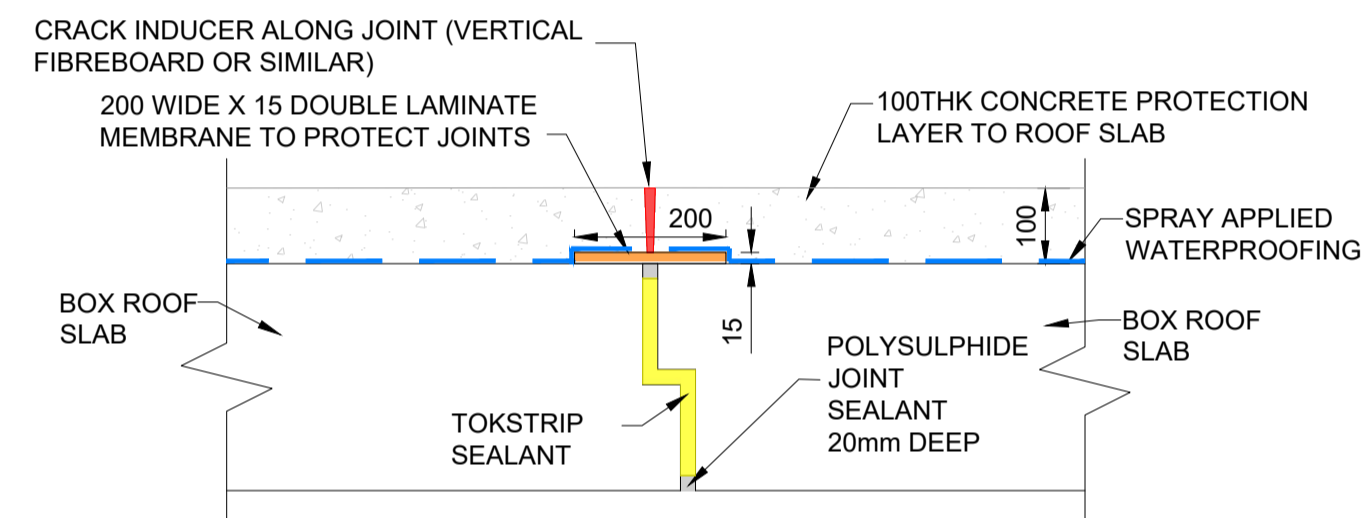
DETAIL 1 PLAN ON BOX/WINGWALL JOINT
SCALE 1:10



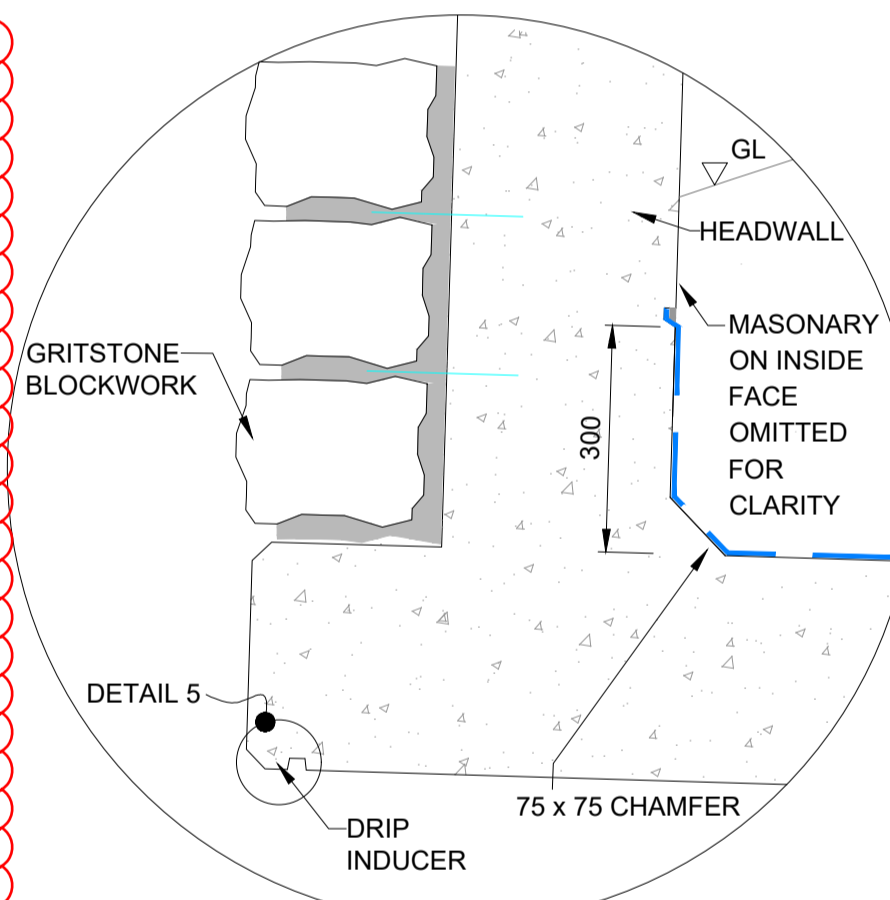
DETAIL 2 - ELEVATION ON BOX BALL/SOCKET JOINT
SCALE 1:10



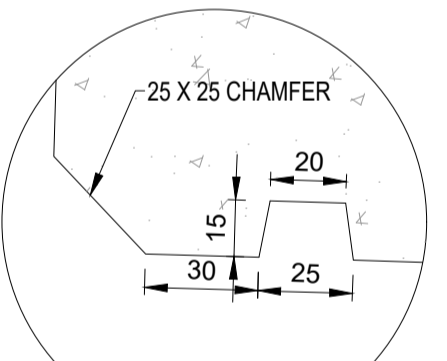
DETAIL 3 - ELEVATION ON BOX VERTICAL/TRANSVERSE JOINT
SCALE 1:10



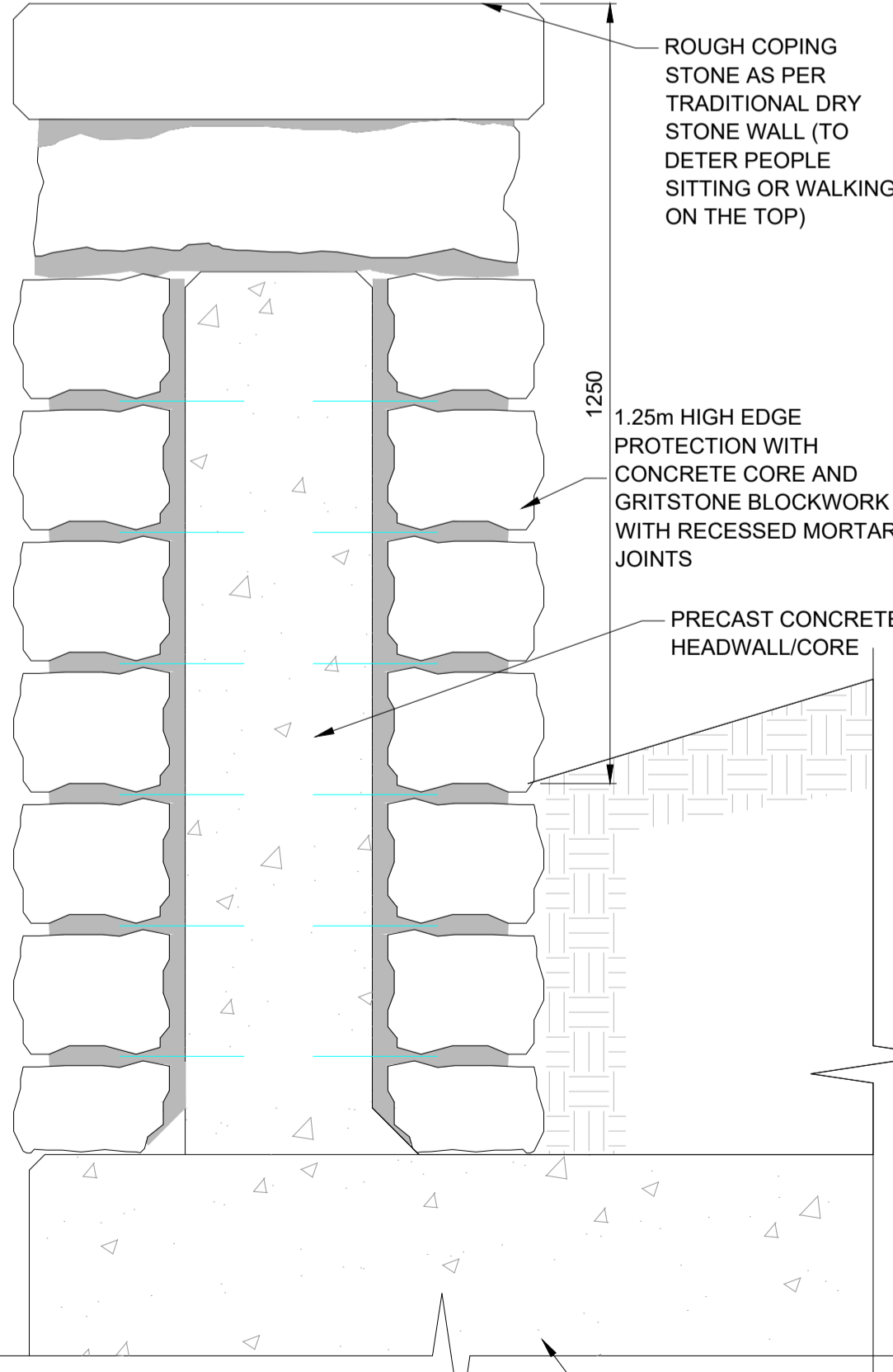
TYPICAL SECTION E-E SHOWING HORIZONTAL JOINT BETWEEN ADJACENT BOX UNITS
SCALE 1:10



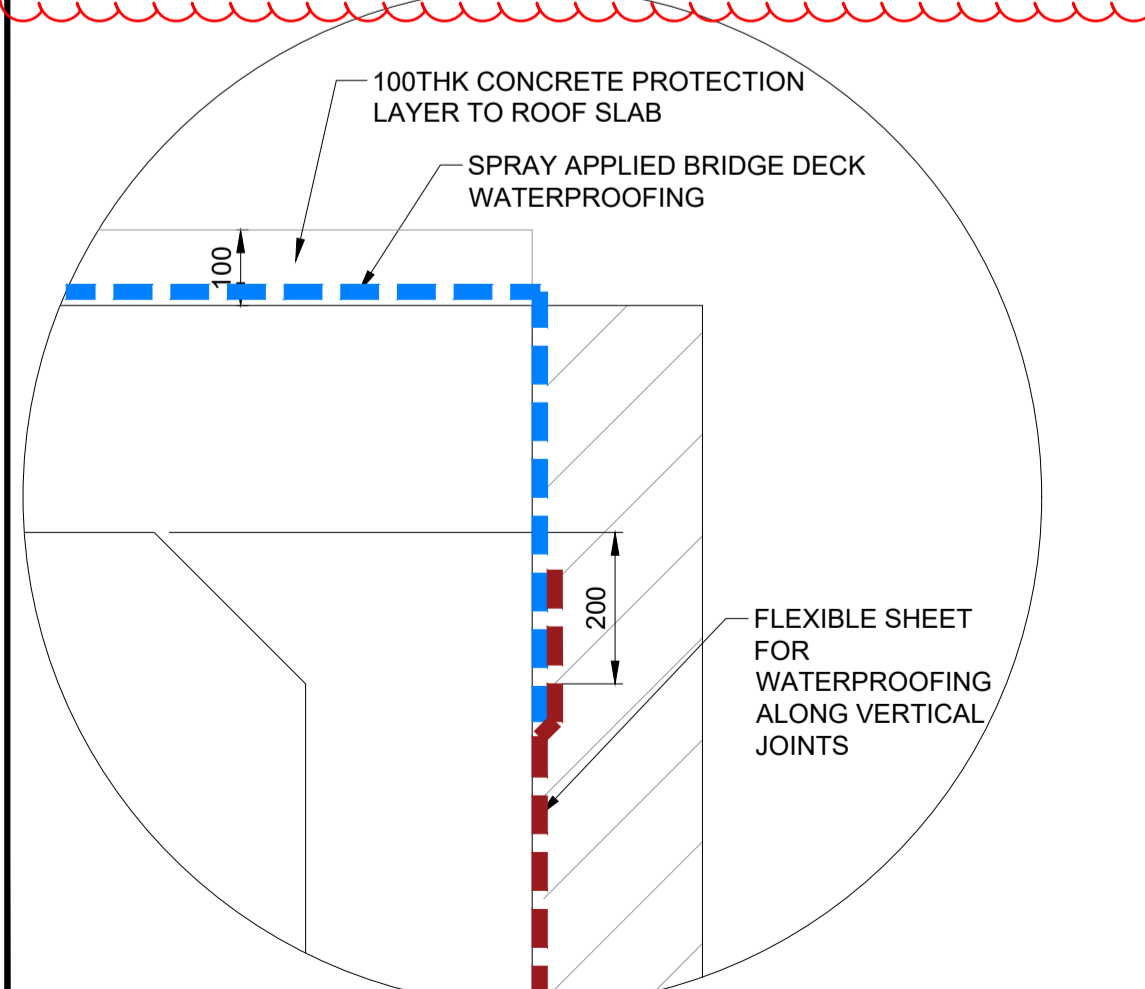
DETAIL 4 - SECTION ON BOX HEADWALL
SCALE 1:10



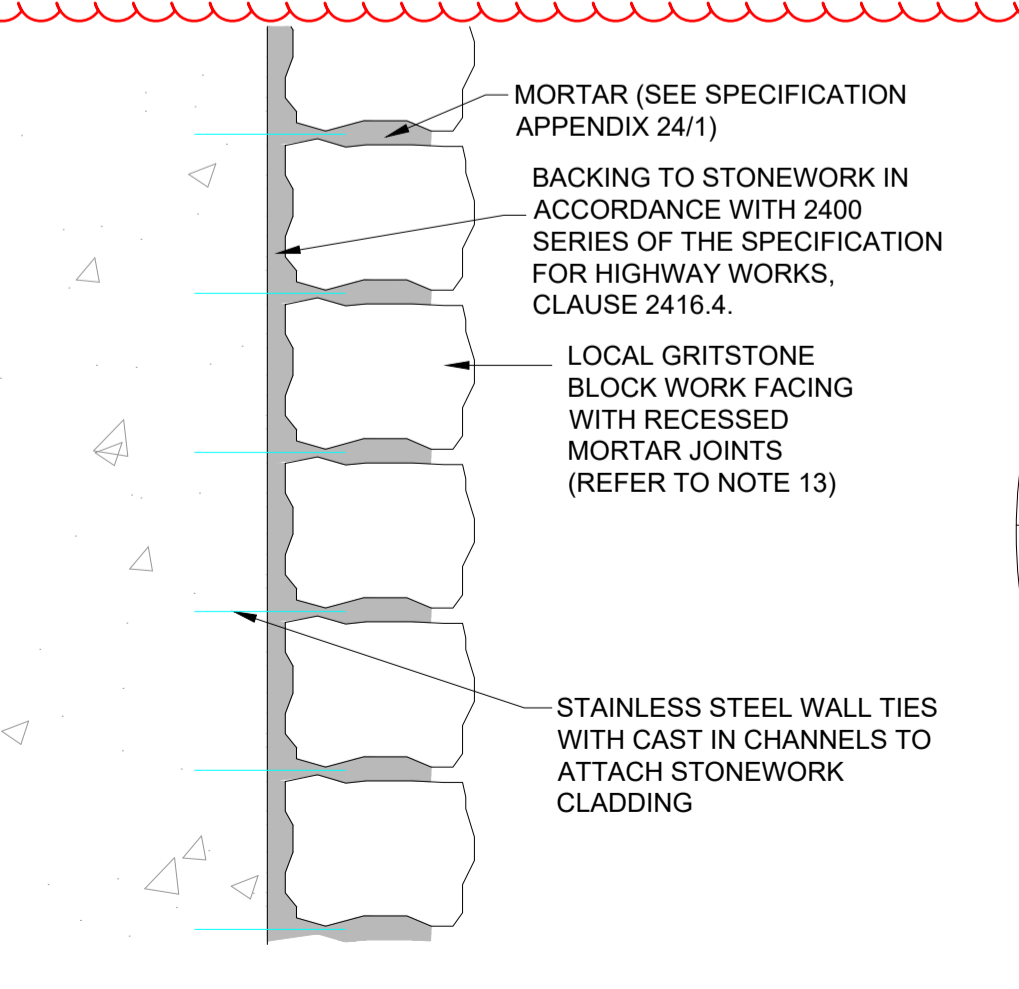
DETAIL 5 - DRIP INDUCER DETAIL
SCALE 1:2



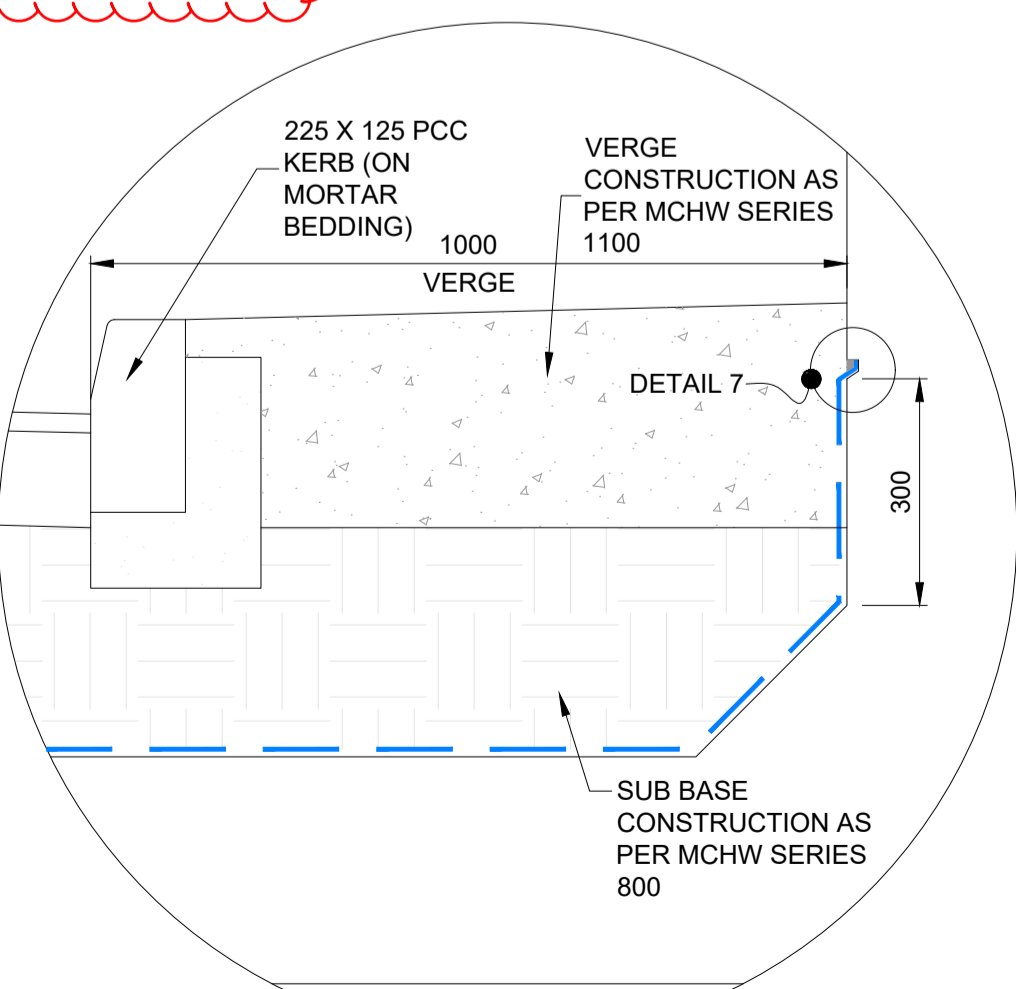
TYPICAL EDGE PROTECTION DETAIL
SCALE 1:10



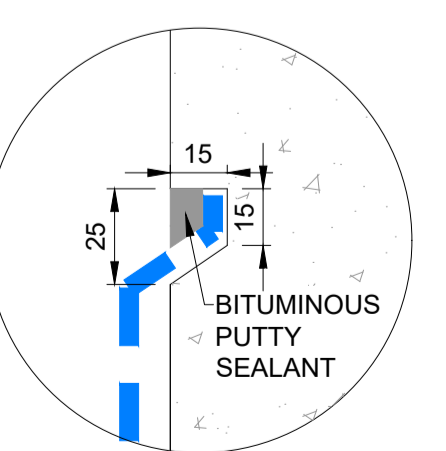
DETAIL 8 - WATERPROOFING LAP DETAIL
SCALE 1:10



TYPICAL STONE FACING DETAIL
SCALE 1:10



DETAIL 6 - SECTION ON VERGE
SCALE 1:10



DETAIL 7 - TYPICAL WATERPROOFING TUCK DETAIL
SCALE 1:2

© Crown Copyright and Database Rights 2015 Ordnance Survey 100018928

- NOTES:**
GENERAL:
- ALL DIMENSIONS ARE IN MM UNLESS NOTED OTHERWISE.
 - ALL LEVELS ARE IN METERS AOD UNLESS NOTED OTHERWISE.
 - DO NOT SCALE IN CASE OF DOUBTS, OMISSIONS OR ERRORS, SEEK CLARIFICATION FROM THE DESIGNER.
 - ALL SURFACES WHICH ARE TO BE COVERED IN SPRAY APPLIED WATERPROOFING ARE TO ACHIEVE A U4 FINISH IN ACCORDANCE WITH MCHW 2000 SERIES. VERTICAL FORMED SURFACES TO BE SUFFICIENTLY ROUGHENED/SCABBLED TO ACHIEVE A SIMILAR FINISH.
 - BURIED CONCRETE SURFACES MORE THAN 150mm BELOW GROUND LEVEL TO BE WATERPROOFED WITH TWO COATS OF BITUMEN PAINT IN ACCORDANCE WITH SPECIFICATION CLAUSE 2006.
 - THIS DRAWING SHALL BE READ IN CONJUNCTION WITH ALL RELEVANT DRAWINGS NYKGGD-WSP-SBR-ST004-DR-CB-0003 TO 0033.
- RESTRAINT SYSTEM REQUIREMENTS**
- A 1.25m HIGH GRITSTONE BLOCKWORK WALL (WITH RECESSED MORTAR JOINTS) EDGE PROTECTION SHALL BE PROVIDED ALONG THE TOP OF THE UNDERPASS HEADWALL AND WINGWALLS.
 - A PROPRIETARY N2 SAFETY BARRIER SHALL BE PROVIDED ALONG THE TRAFFIC FACE OF THE WALL TO SAFEGUARD ERRANT VEHICLES FROM IMPACT DAMAGE. REFER TO THE 400 SPECIFICATION SERIES AND RELEVANT APPENDICES FOR FURTHER DETAILS.
- FACING REQUIREMENT**
- THE HEADWALLS AND WINGWALLS SHALL BE FACED WITH GRITSTONE MORTARED BLOCKWORK, LOCALLY SOURCED. DETAILS OF THE STONE WORK SHALL BE INCLUDED IN THE SERIES 2400 SPECIFICATION SERIES. BLOCKWORK SHALL BE LAID IN A RANDOM RUBBLE BROUGHT TO COURSE PATTERN. BLOCKS SHALL BE TIED BACK TO THE HEADWALLS AND WINGWALLS USING PROPRIETARY STAINLESS STEEL WALL TIES WITH CAST IN CHANNELS. MORTARED JOINTS SHALL BE RECESSED FROM THE FACE BY 25MM TO PROVIDE A DRY STONE APPEARANCE. CONCRETE BLOCKWORK (WITH STAINLESS STEEL WALL TIES) SHALL BE USED TO A LEVEL 250mm BELOW GROUND LEVEL TO RATIONALISE STONEMWORK QUANTITIES.
- STRUCTURAL CONCRETE**
- SEE DRAWINGS NYKGGD-WSP-SBR-ST004-DR-CB-0008 TO 0033 AND THE SERIES 1700 SPECIFICATION AS WELL AS ITS APPENDICES FOR CONCRETE DETAILS.

SAFETY, HEALTH AND ENVIRONMENTAL SYMBOL LEGEND
INDICATES A RESIDUAL RISK AS A WARNING

Rev.	Date	Description	By	Chkd	App'd
C01	27/07/23	FOR CONSTRUCTION ISSUE	LS	AA	HM

wsp
3 Wellington Pl, Leeds LS1 4AP, United Kingdom
T+ 44 (0) 113 395 6200, F+ 44 (0) 113 395 6201
wsp.com

North Yorkshire County Council

Project Title
A59 KEX GILL DIVERSION

Drawing Title
A59 KEXGILL WESTERN UNDERPASS (ST004) GENERAL ARRANGEMENT SHEET 2 OF 2

Scale	Drawn	Checked	Approved	Authorised
AS SHOWN	LS	AA	HM	GC

Drawing Status
FOR REVIEW
Suitability: S3

Drawing Number	Project	Originator	Volume	Project Ref. No.
NYKGGD	ST004	WSP	SBR	
Location	DR	Type	Role	Number
				C01