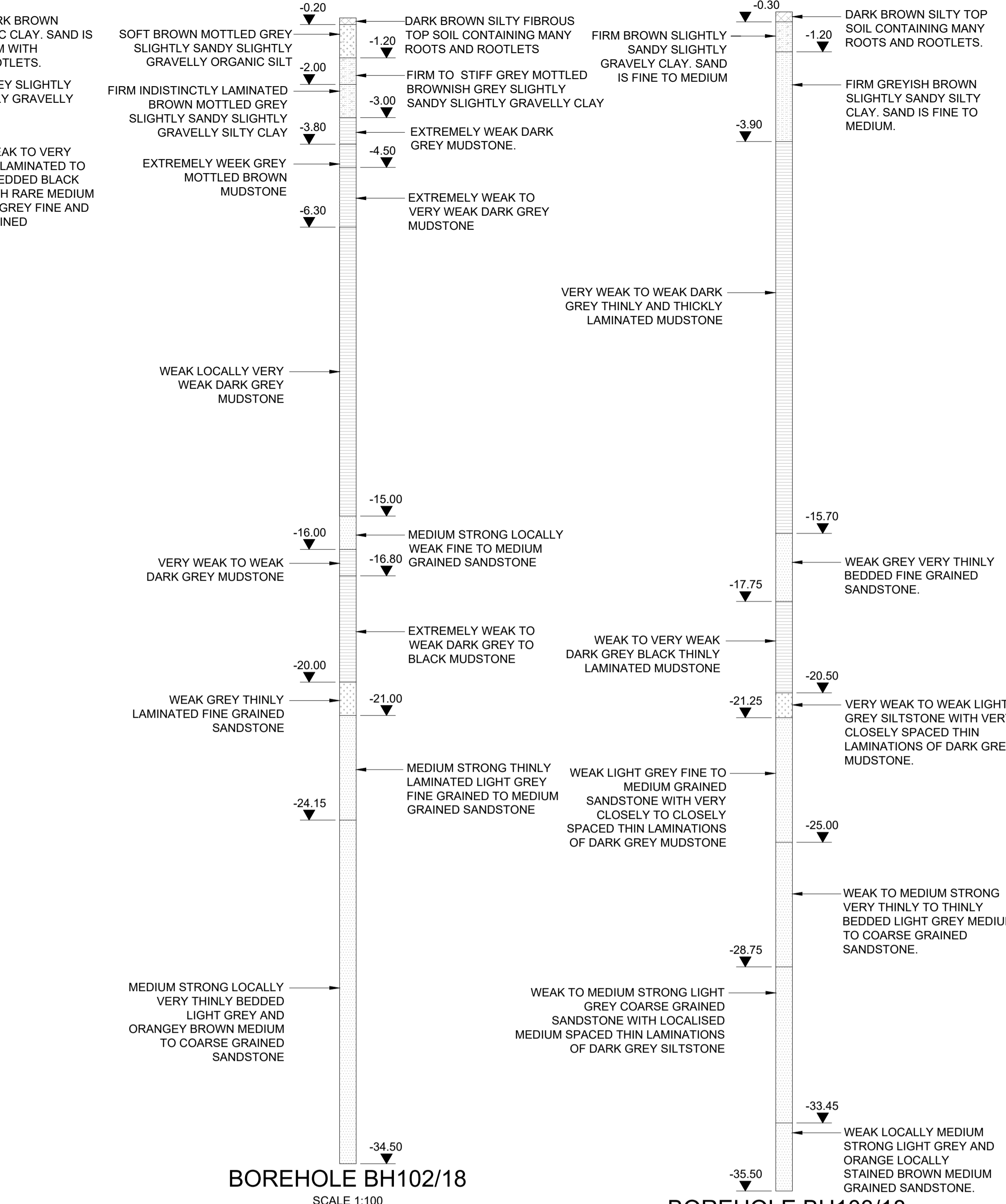
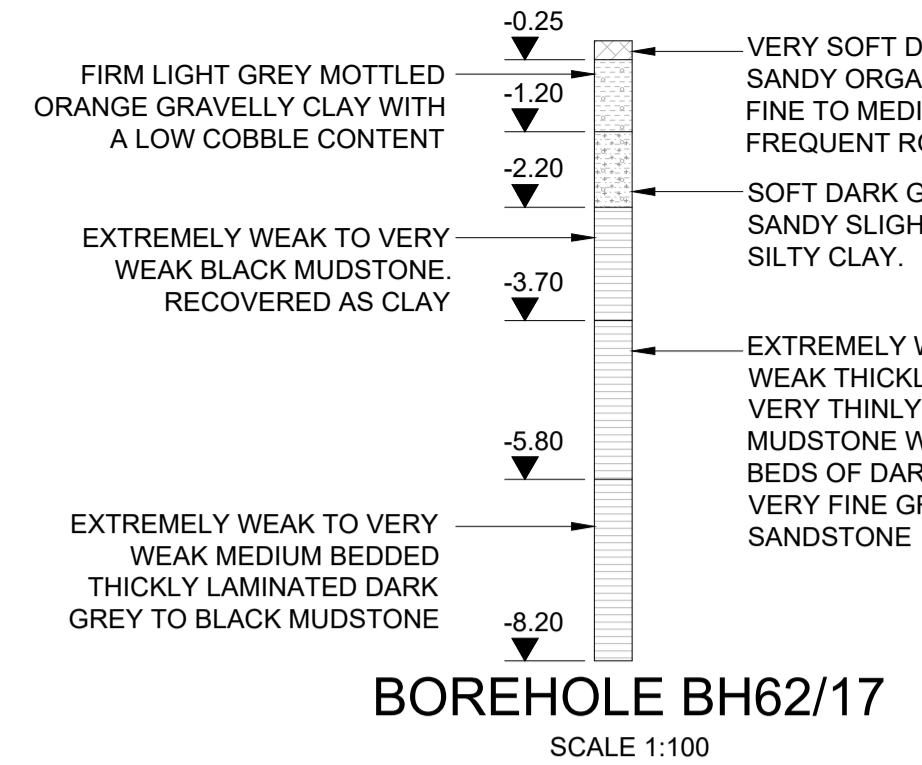
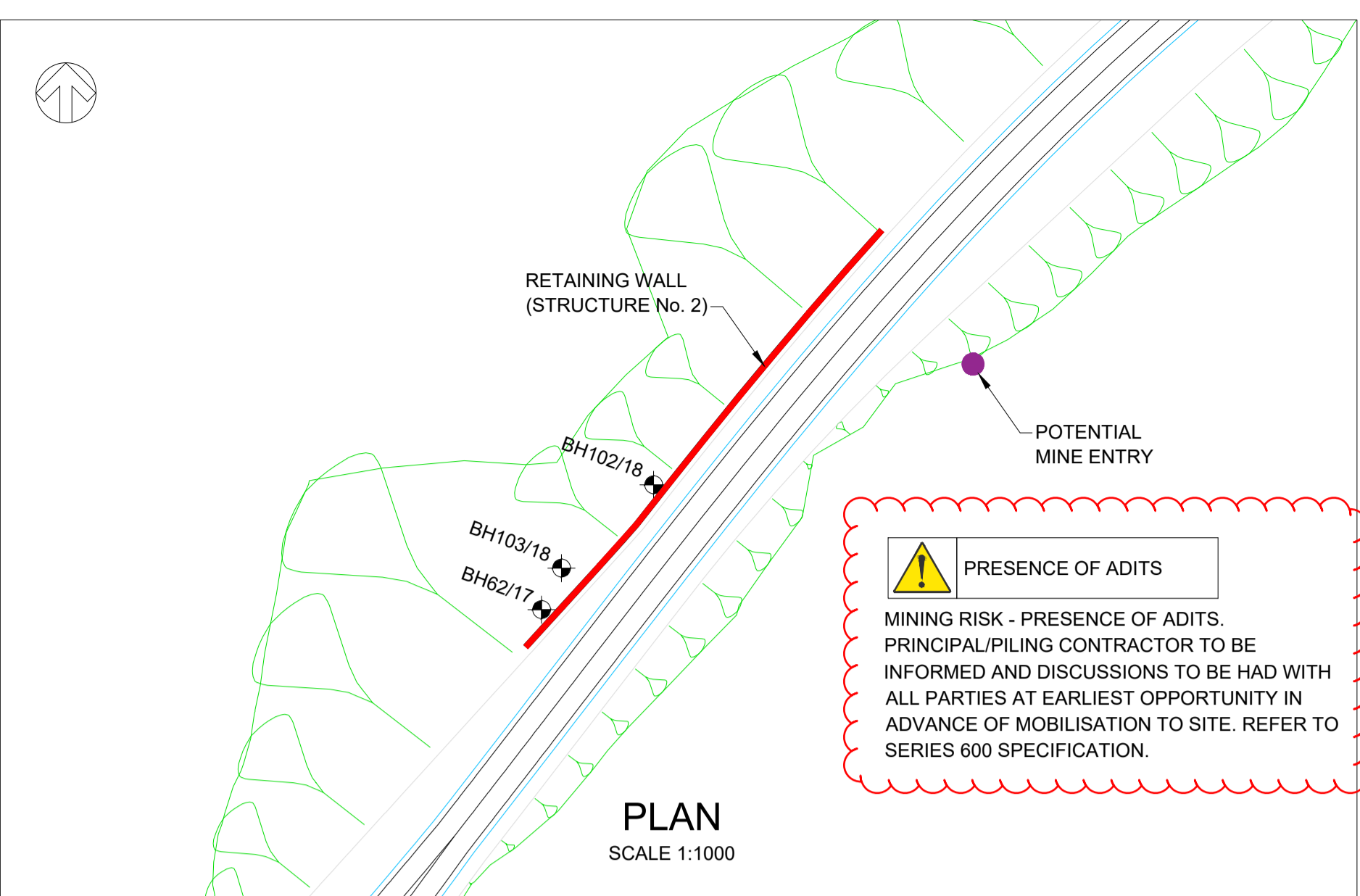


DO NOT SCALE

100
0 10
Millimetres



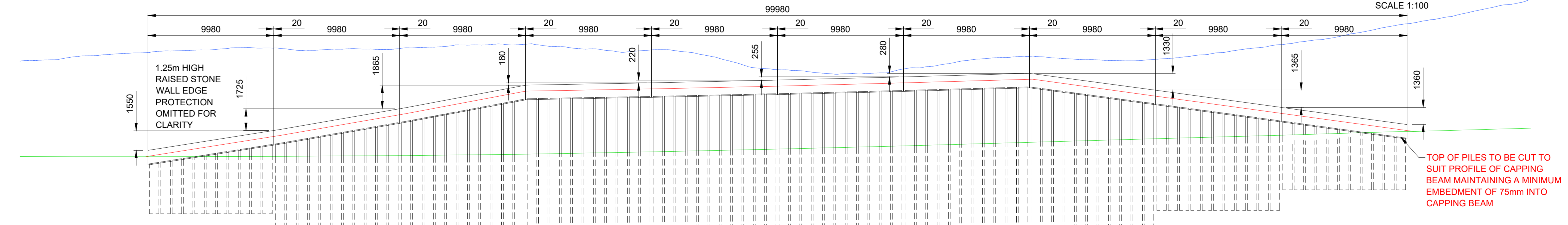
- INDICATIVE CONSTRUCTION SEQUENCE**
- THE FINAL CONSTRUCTION SEQUENCE SHALL BE CONFIRMED BY THE PRINCIPAL CONTRACTOR. THE FOLLOWING CONSTRUCTION SEQUENCE IS ASSUMED AT THIS STAGE:
- SET UP SITE COMPOUND
 - CONSTRUCT A59 DIVERSION ROAD TO ALLOW SITE ACCESS TRAFFIC
 - EXCAVATE SLOPE AND A59 CUTTING TO PILING PLATFORM LEVEL
 - SET UP PILING MACHINE PLATFORM
 - INSTALL PILES SECTIONS ALONG ALIGNMENT
 - BREAKDOWN PILES TO FINAL CUT-OFF LEVEL
 - INSTALL CONCRETE CAPPING BEAM
 - INSTALL BACK OF WALL DRAINAGE INCLUDING NO FINES CONCRETE, GEOTEXTILE MEMBRANE AND DRAINAGE PIPES
 - EXCAVATE REMAINDER OF A59 CUTTING
 - INSTALL GRITSTONE BLOCK WORK FACING AND RAISED STONE WALL
 - INSTALL CARRIAGEWAY/VERGE
 - INSTALL SAFETY BARRIER
 - COMMISSION NEW ROAD ALIGNMENT

- ⚠ WORKING AT HEIGHT
- ⚠ DEEP EXCAVATIONS FOR CONVENTIONAL RC WALL CONSTRUCTION
- ⚠ DAMAGE TO EXISTING SERVICES, ELECTROCUTION
- ⚠ LIFTING/INSTALLATION OF LARGE REINFORCEMENT CAGES
- ⚠ HAVS DUE TO EXCESS PILE CUTTING/TRIMMING

THE CONTRACTOR SHALL MONITOR DEFLECTIONS OF THE CONTIGUOUS BORED PILE WALL AND CAPPING BEAM FOR A PERIOD STARTING NO LATER THAN TWO WEEKS PRIOR TO ANY EXCAVATION WORKS IN FRONT OF THE PILES AND THEREAFTER REGULARLY DURING THE EXCAVATION PHASE. MONITORING MAY CEASE AFTER FOUR WEEKS POST EXCAVATION WORKS AND ONLY ON INSTRUCTION FROM THE DESIGNER'S SITE REPRESENTATIVE. INSTRUMENTATION FOR MONITORING SHALL COMPRISE INCLINOMETERS AND 3D TARGETS. MONITORING SHALL BE IN ACCORDANCE WITH APPENDIX 16/17.

WORK ON THE RETAINED SIDE OR NON RETAINED SIDE OF THE CONTIGUOUS BORED PILE WALL WHICH MAY BE AFFECTED BY WALL MOVEMENT SHALL NOT COMMENCE UNTIL THE OVERSEEING ORGANISATION HAS DETERMINED THAT ANY PREDICTED RESIDUAL MOVEMENT WILL HAVE NO DELETERIOUS EFFECT ON THE WORKS.

*CHAINAGES AND CARRIAGEWAY LEVELS PROVIDED IN THIS TABLE ARE EXTRACTS FROM THE HIGHWAYS MODEL AND MAY NOT CORRELATE EXACTLY TO PILE POSITIONS. FOR PILE/PILE CAP SETTING OUT INFORMATION REFER TO THE SETTING OUT TABLE ON DRAWING NYKGGD-WSP-SRW-ST002-DR-CB-0004 AND 0006



EXISTING GROUND LEVEL (m AOD)	PROPOSED VERGE LEVEL AT RW FRONT FACE (m AOD)	BACK OF RETAINING WALL LEVEL (m AOD)	RETAINED HEIGHT	PROPOSED TOE LEVEL (m AOD)	MAINLINE CHAINAGE (METRE)*
300.356	292.808	292.785	0.000	288.270	2740.000
301.040	292.765	292.765	0.000	288.270	2750.000
301.401	292.810	294.360	4.560	288.270	2759.954
301.344	292.875	296.087	3.212	288.270	2769.900
301.344	292.875	296.087	3.333	288.270	2770.000
301.689	292.882	297.952	4.800	288.270	2779.844
301.236	293.162	298.162	4.900	288.270	2789.804
299.701	293.380	298.380	4.900	288.270	2799.753
299.708	293.636	298.636	4.900	288.270	2809.683
300.733	293.918	298.918	5.000	288.270	2819.623
300.494	294.202	297.617	3.415	288.270	2829.557
301.667	294.865	298.249	1.764	288.270	2839.454
303.307	294.782	294.884	0.102	288.270	2849.365
305.215	295.050	295.050	0.000	288.270	2859.246

- NOTES: GENERAL**
- ALL DIMENSIONS ARE IN MILLIMETRES UNLESS NOTED OTHERWISE.
 - ALL LEVELS ARE IN METRES ABOVE A.O.D UNLESS NOTED OTHERWISE.
 - DO NOT SCALE IN CASE OF ANY DOUBTS, OMISSIONS OR ERRORS, SEEK CLARIFICATIONS FROM THE DESIGNER.
 - THE WORKS SHALL BE UNDERTAKEN IN ACCORDANCE WITH THE SPECIFICATION FOR HIGHWAY WORKS AND THE RELEVANT APPENDICES/DRAWINGS.
 - THE CONTRACTOR SHALL IN ADVANCE OF COMMENCING ANY SECTION OF THE WORKS, CONSULT WITH THE RELEVANT AUTHORITIES AND SATISFY THEMSELVES TO THE EXACT LOCATION, LINE, LEVEL AND NUMBER OF SERVICES INCLUDING ANY OTHER RELEVANT INFORMATION. THE CONTRACTOR SHALL COMPLY FULLY WITH ANY REQUIREMENTS THAT THE RELEVANT AUTHORITY HAS WITH REGARDS TO WORKING IN THE VICINITY OF THEIR APPARATUS. REFER TO APPENDIX 1/16 AND THE RELEVANT SERVICE DRAWINGS FOR THE LATEST STATUTORY UNDERTAKERS INFORMATION. THE CONTRACTOR IS RESPONSIBLE FOR THE DIVERSION OF ALL SERVICES IMPACTING THE WORKS UNLESS OTHERWISE STATED.
 - A MAXIMUM 1 IN 3 SLOPE SHALL BE RETAINED BEHIND THE NEW RETAINING WALL (SEE DRAWINGS NYKGGD-WSP-HGT-SG-DR-CE-0101 TO 0107 FOR DETAILS). REFER TO SERIES 600 SPECIFICATION FOR EARTHWORK CONSTRUCTION.
 - THE CONTRACTOR SHALL MEASURE AND CONFIRM ALL DIMENSIONS/LEVELS THAT HAVE A DIRECT IMPACT ON THE WORKS PRIOR TO EXECUTION. THE CONTRACTOR SHALL INFORM THE DESIGNERS OF ANY AMBIGUITIES.
 - THE CONTRACTOR SHALL REFER TO THE SPECIFICATION APPENDIX 16/17 FOR DETAILS OF THE PROPOSED GEOTECHNICAL INSTRUMENTATION AND MONITORING DURING THE WORKS TO INSTALL THE CONTIGUOUS BORED PILED RETAINING WALLS.
 - SHOULD GROUND CONDITIONS ENCOUNTERED DURING PILING/EXCAVATION DIFFER FROM THOSE ANTICIPATED FROM THE AVAILABLE GROUND INVESTIGATION INFORMATION, THE DESIGNER SHALL BE INFORMED IMMEDIATELY. A SUITABLY QUALIFIED GEOTECHNICAL ENGINEER SHALL PROVIDE A WATCHING BRIEF DURING EXCAVATION WORKS IN THE VICINITY OF THE POTENTIAL MINE ENTRY.
- HEALTH & SAFETY**
- THE CONTRACTOR SHALL REFER TO THE PRE-CONSTRUCTION H&S FILE FOR DETAILS OF THE H&S RISKS AND HOW THESE HAVE BEEN REDUCED/ELIMINATED DURING THE DESIGN PROCESS. KEY RESIDUAL RISK ARE RECORDED IN THE H&S TABLE AND HIGHLIGHTED ON THIS DRAWING.

SAFETY, HEALTH AND ENVIRONMENTAL SYMBOL LEGEND
 ⚠ INDICATES A RESIDUAL RISK AS A WARNING

Rev.	Date	Description	By	Chkd	App'd
C01	21/07/23	FOR CONSTRUCTION ISSUE	LS	AA	HM

3 Wellington Pl, Leeds LS1 4AP, United Kingdom
 T+ 44 (0) 113 395 6200, F+ 44 (0) 113 395 6201
 wsp.com

Project Title: **A59 KEXGILL DIVERSION**

Drawing Title: **A59 KEXGILL (ST002) CONTIGUOUS BORED PILED RETAINING WALL GENERAL ARRANGEMENT SHEET 1 OF 2**

Scale	Drawn	Checked	Approved	Authorised
AS SHOWN	LS	AA	HM	GC

Original Size	Date	Date	Date	Date
A1	21/07/23	21/07/23	21/07/23	21/07/23

Drawing Status: **FOR REVIEW** Suitability: **S3**

Project	Originator	Volume	Project Ref. No.
NYKGGD	WSP	SRW	

Location	DR	CB	0003	C01
ST002	DR	CB	0003	C01